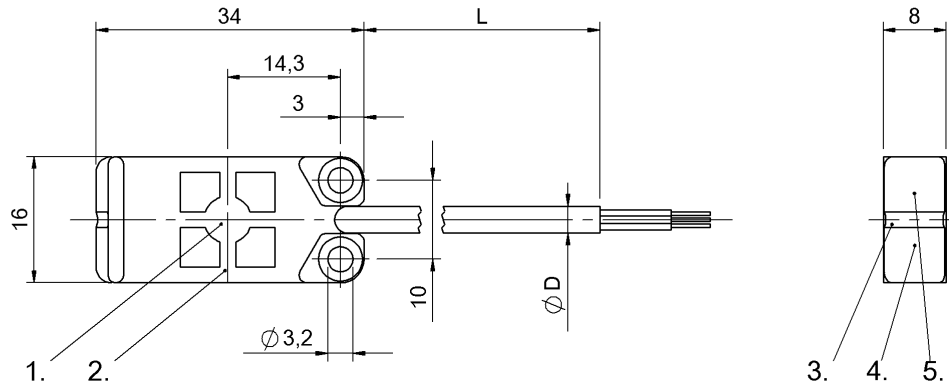


SK1-8-34/16/8-P-b-S



1) Sensing surface 2) Housing 3) Cover 4) Power indicator green 5) Function indicator yellow

Display/Operation

Function indicator	yes
Power indicator	yes
Setting	teachable

Electrical connection

Cable diameter D	3.40 mm
Cable length	2 m
Conductor cross-section	0.14 mm ²
Connection type	Cable, 2.00 m, PUR
Number of conductors Protection against device mix-ups	4
Short-circuit protection	yes
	yes

Electrical data

Load capacitance max. at U _e	0.33 µF
No-load current I _o max. at U _e	12.0 mA
Operating voltage U _b	12...30 VDC
Polarity reversal protected	yes
Rated insulation voltage U _i	75 V DC
Rated operating current I _e	50 mA
Rated operating voltage U _e DC	24 V
Ready delay t _v max.	200 ms
Repeat accuracy max. (% of S _r)	5.0 %
Residual current I _r max.	10 µA
Residual ripple max. (% of U _e)	10 %
Switching frequency Utilization category	50 Hz DC-13
Voltage drop static max.	1.5 V

Environmental conditions

Ambient temperature IP	-25...70 °C
rating per IEC 60529	IP67
Storage temperature	-25...85 °C

Functional safety

MTTF (40 °C)	98 a
--------------	------

General data

Approval/Conformity	CE UL Listed
Basic standard	IEC 60947-5-2
Scope of delivery	Holder
Sensitivity	Switching distance teachable

Material

Housing material	PP
Material jacket	PUR
Material sensing surface	PP

Mechanical data

Dimension	34 x 16 x 8 mm
Installation	flush
Tightening torque	0.2 Nm

SK1-8-34/16/8-P-b-S

Output/Interface

Switching output PNP Normally open (NO)

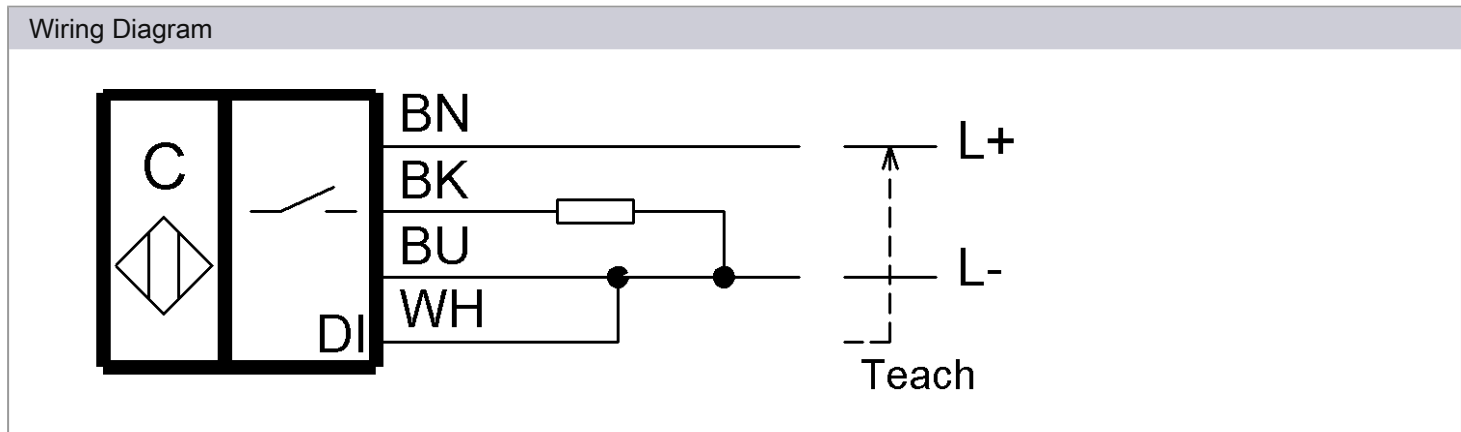
Range/Distance

Effective operating distance S_r 8 mm
 Hysteresis H max. (% of S_r) 15.0 %
 Measuring range Temperature 1...8 mm
 drift max. (% of S_r) 20 % [-5...55 °C]

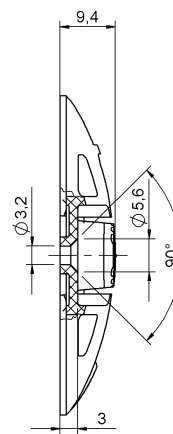
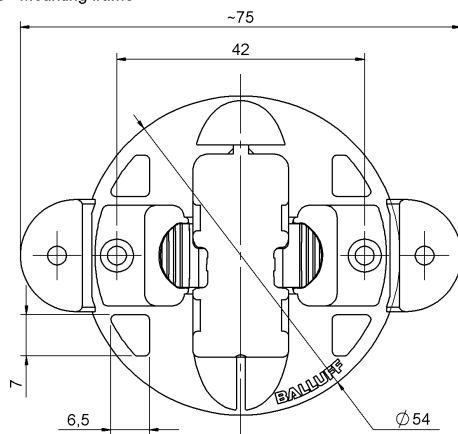
Remarks

For full calibration connect input DI to L+ for 2...7 seconds. For empty calibration connect to L+ for 7..12 seconds. Input DI can be used for teaching the switching point. In normal operation input DI should be connected continuously to L-.

Specification of the MTTF value and the B10d value do not represent any bin-ding quality and/or life expectancy guarantees.



Zubehör - Halter
 Accessories - Mounting frame



Werkstoff Halter: PP
 Material mounting frame: PP